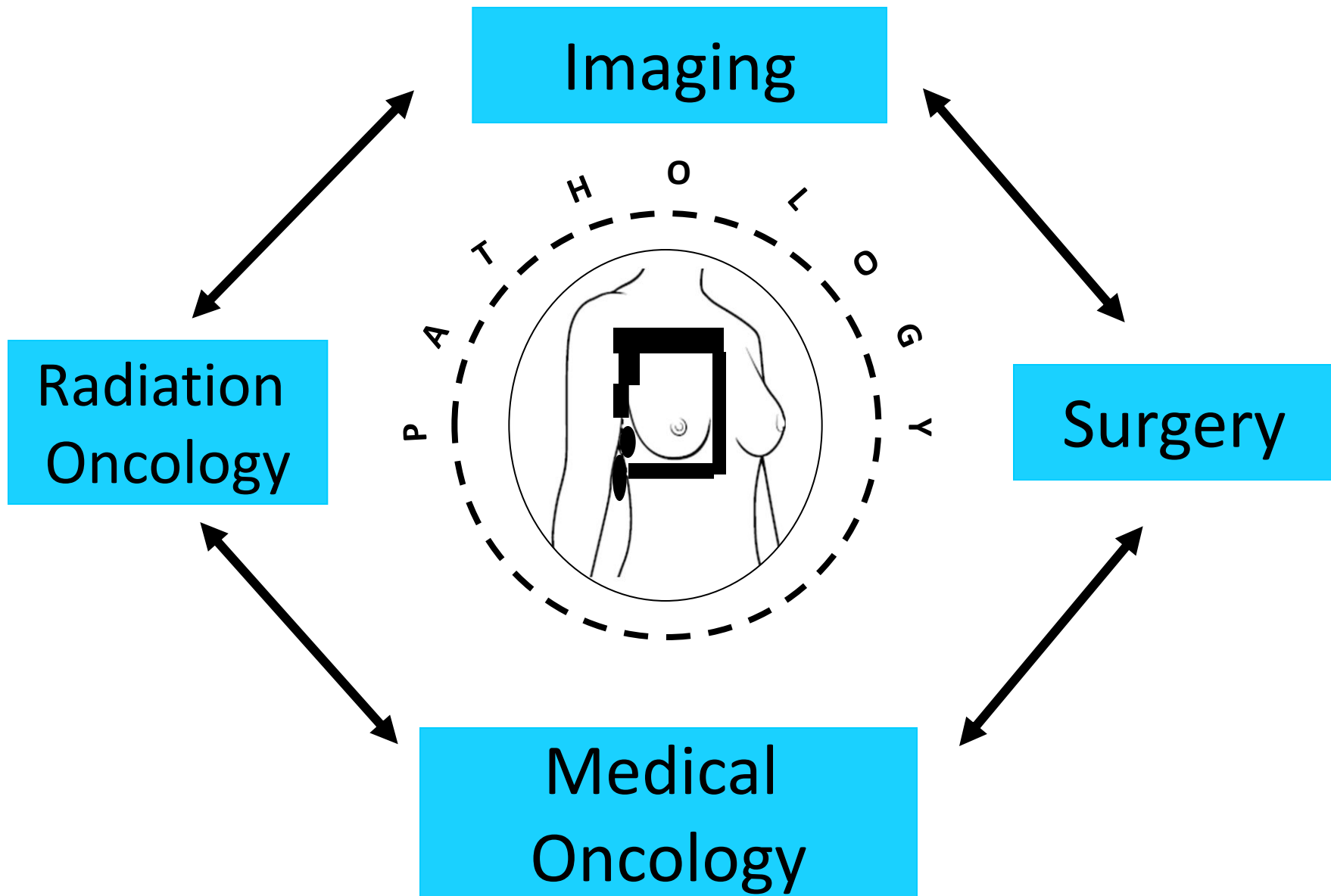


Breast Cancer Care



Imaging

Surgery

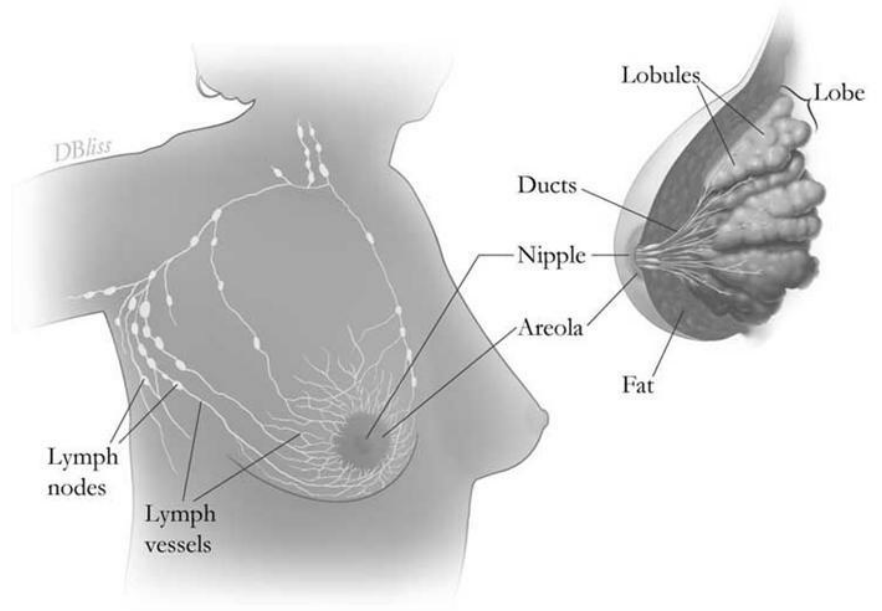
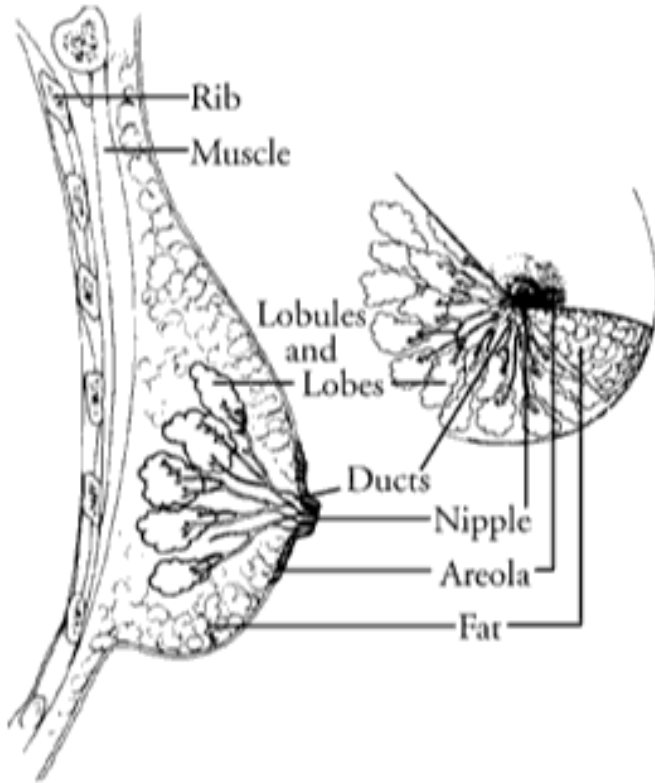
Radiation
Oncology

Medical
Oncology

Breast Anatomy

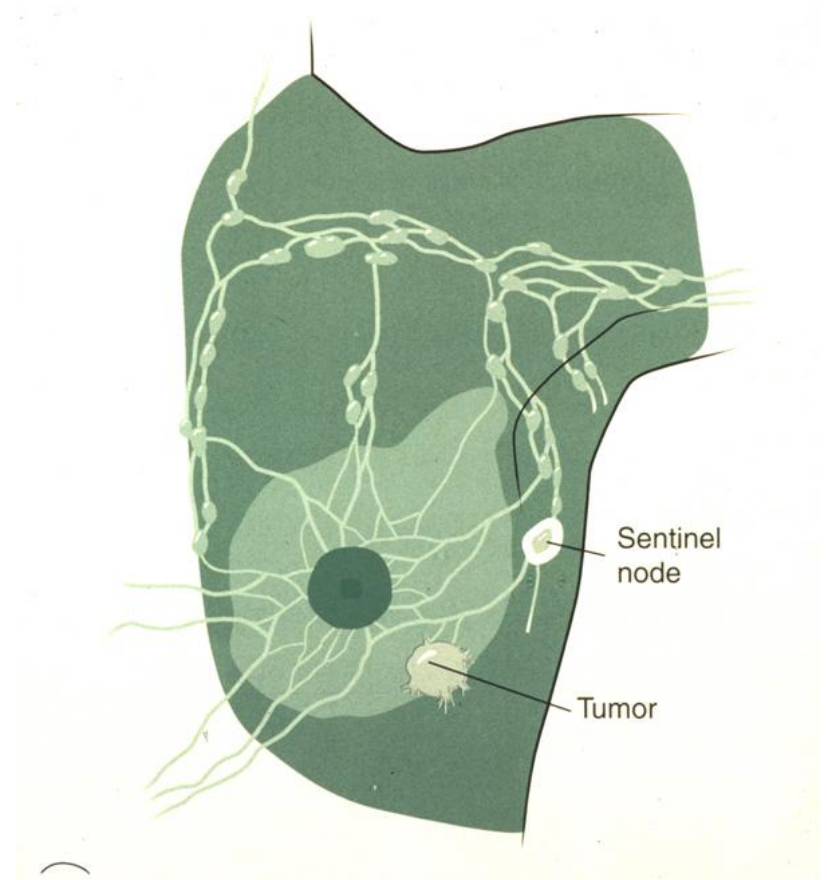
Figure 1.1

Breast Structure

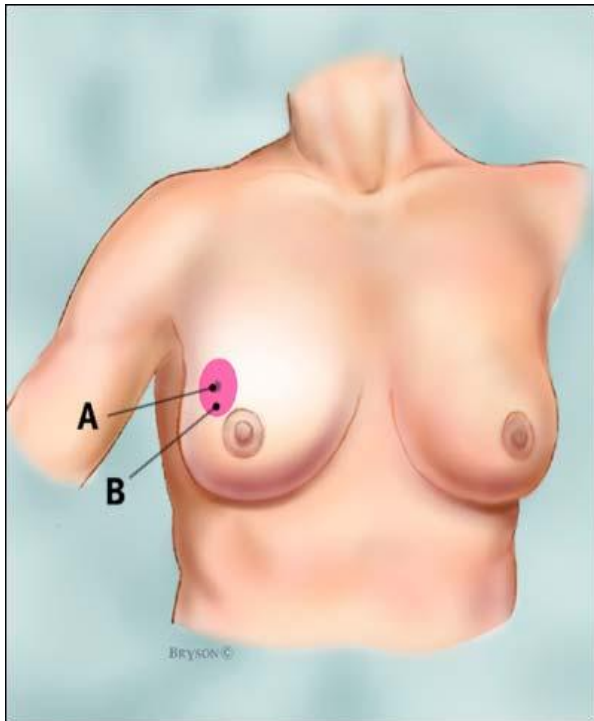


Surgical goals

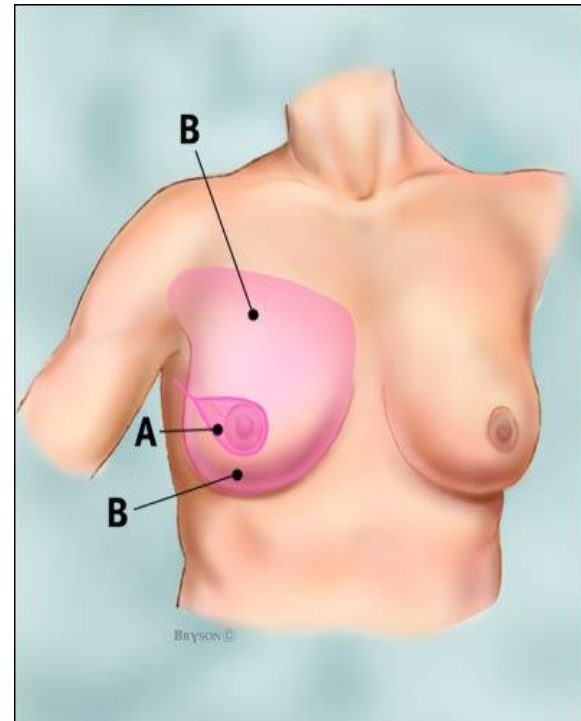
- Remove the primary tumor
- Determine if disease has spread to the axillary lymph node basin



Surgical options



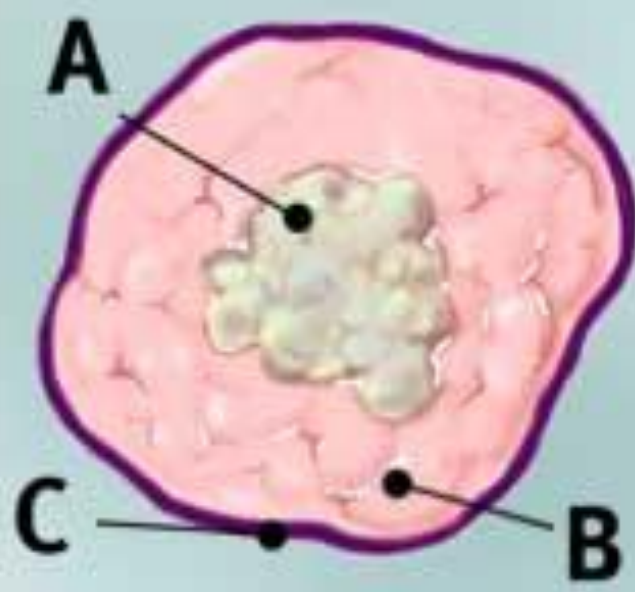
Lumpectomy



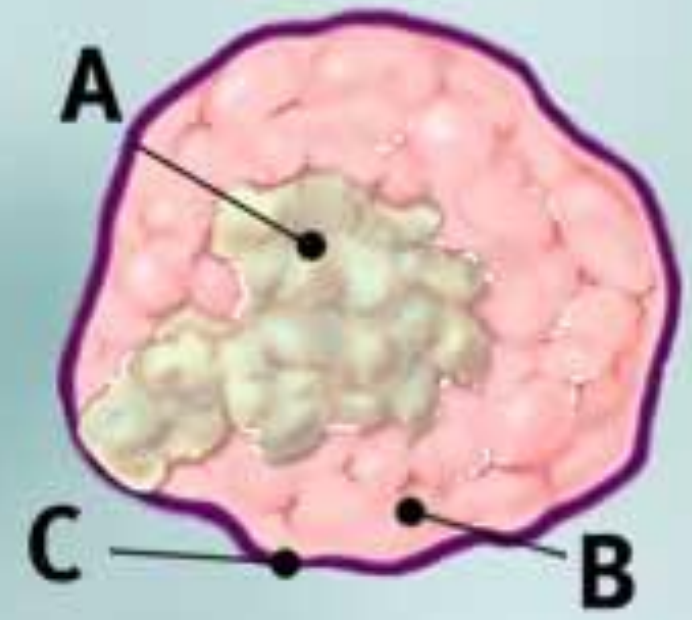
Total Mastectomy







Negative Margins



Positive Margins

Radiation Therapy for BCT

- Conventional methods
 - 6 weeks of therapy
 - 5 days/week
 - Whole breast

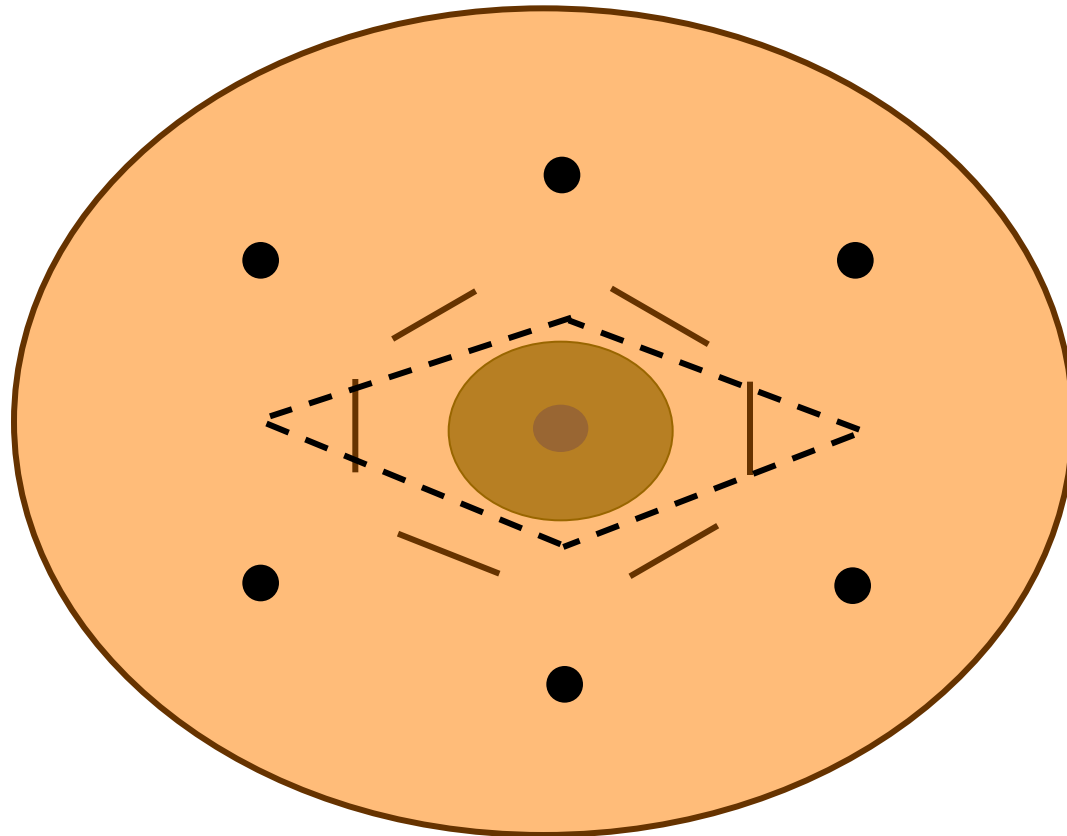


Goals of BCT

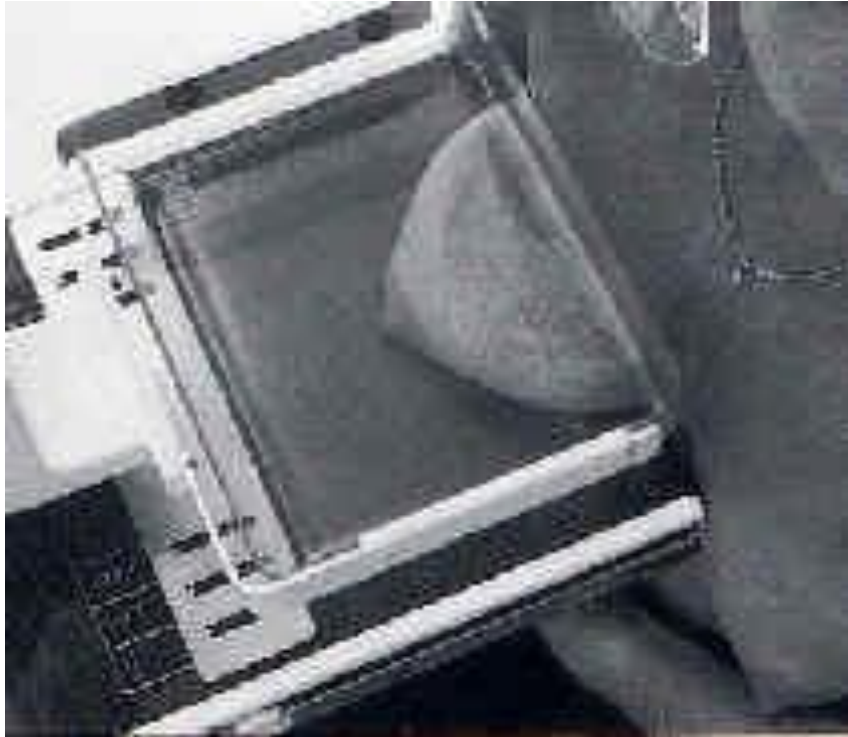
- Tumor removal
- Staging
- Oncologic equivalency to total mastectomy
- Less surgical morbidity
- Preservation of breast
- Cosmesis



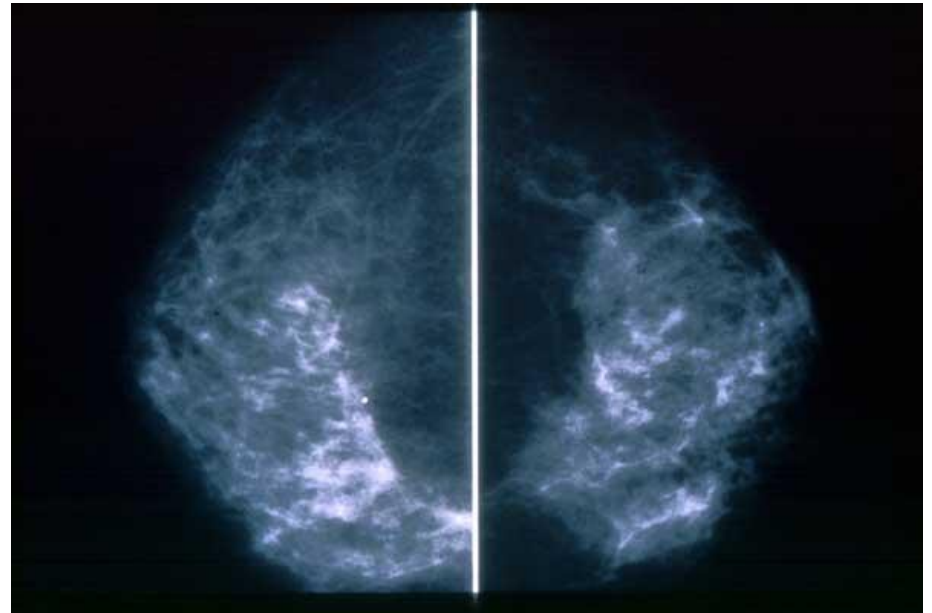
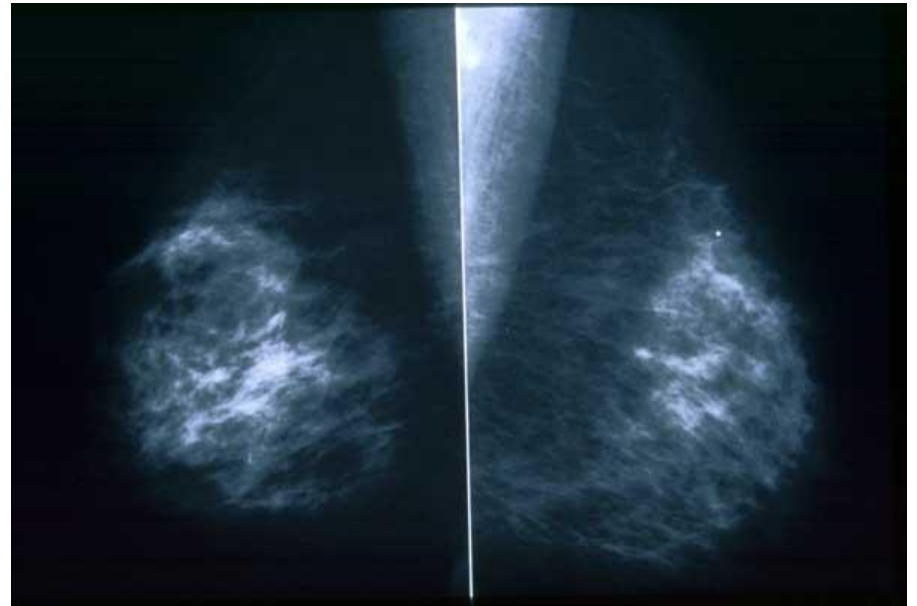
Surgical Planning



Screening Mammography



Compression: craniocaudad



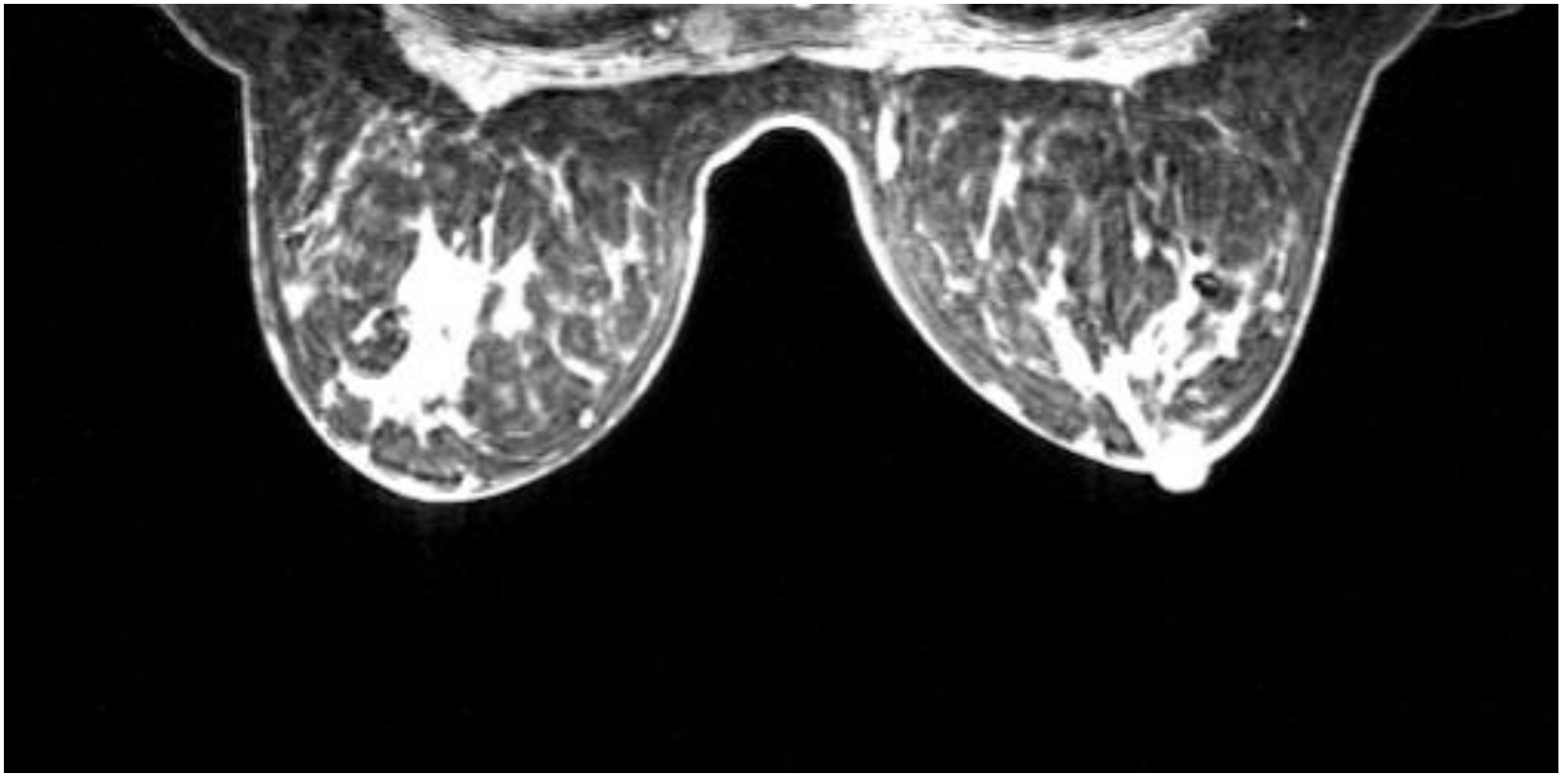
Ultrasound evaluation of breast masses identified on mammogram



Breast MRI



*Can we predict breast contour
based on preoperative imaging and
“virtual” lumpectomy?*



*Can we predict breast contour
based on preoperative imaging?*

